

Spohn Performance, Inc.
494 E Lincoln Ave Myerstown, PA 17067
1-888-365-6064 www.spohn.net

Part# D03-DFSK1 – Dual Front Shock Mounting Kit

2003+ Dodge Ram 4x4 2500 & 3500 | Stock Ride Height

USE OF THIS PRODUCT IS ACCEPTANCE OF SELLER'S DISCLAIMER OF WARRANTY!

By their very nature, competition components are constantly pushed to their limits. While our components are designed to withstand intense race conditions, it is impossible to control the quality of installation or the varying conditions in which they are used. It is for this reason that absolutely no warranty or guarantee is either written or implied. Neither the seller nor the manufacturer will be liable for any loss, damage, or injury – direct or indirect – arising from the use of or inability to determine the use of any product. Before using, the user should determine the suitability of the product for its intended use, and the user shall assume all responsibility in connection therewith. Spohn Performance, Inc. makes no guarantee as to the legality for any specific class. Spohn Performance, Inc. makes no claims, nor does it intend its products to be used in street driven vehicles. Spohn Performance, Inc. reserves the right to make changes in design or add to or improve on their product without incurring any obligation to install the same on product previously manufactured. The Buyer agrees to indemnify and hold Spohn Performance, Inc. harmless from any claim, action or demand arising out of or incident to the Buyer's installation or use of products purchased from Spohn Performance, Inc.

INSTRUCTIONS

1. Block the rear tires of the vehicle so that the vehicle is stable and can't roll. Safely lift the front of the truck and support the frame with jack stands. Place a jack stand on both the driver's and passenger's side. Next, remove the front wheels from both sides.
2. Place a pair of hydraulic floor jacks under the front axle. Place one on the driver's side and one on the passenger's side. Carefully raise up on both jacks at the same time until the jacks come into contact with the front axle.
3. Open the hood of your truck. Working on the driver's side, locate and remove the upper shock nut. Also, remove the upper shock retainer washer and grommet. Save the upper shock nut, retainer washer and grommet. Repeat procedure on the passenger's side.
4. Working on the driver's side, remove the (3) nuts that hold the upper stock shock tower to the stock location. Save the (3) nuts for later re-installation. Set the upper stock shock tower aside for later re-installation. Disconnect the front sway bar end link. Repeat procedure on the passenger's side.
5. Working on the driver's side, lower the jack and decompress the shock until the shock and spring swing clear of the stock upper spring seat (**See Photo 5 below**). Remove the stock upper spring's rubber isolator. Remove the stock upper shock mount's lower retainer plate. Repeat procedure on the passenger's side.
6. Working on the driver's side, install the supplied upper shock mount retainer plate with longer than stock studs. Place the stock upper spring rubber isolator inside the upper spring seat (make sure it's clocked correctly). Swing the spring back in place and jack the front axle up to re-seat the spring. Repeat procedure on the passenger's side.
7. Locate the new driver's side and passenger's side upper dual shock mounting brackets. Also, locate the stock upper shock tower and the nuts that were removed in Step 4. Working on the driver's side install the new upper dual shock bracket in between the stock upper coil pocket and the upper shock tower. Secure using the nuts that were removed in Step 4. **Make sure to use Loctite.** Torque to 30 ft./lbs. Repeat procedure on the passenger's side. **See Photo 1 Below (Driver's Side Shown).**
8. Locate (2) 3/8" x 1.25" long bolts, (2) 3/8" flat washers and (2) 3/8" flanged head lock nuts from the hardware bag. Working on the driver's side, using the new upper dual shock mounting bracket as a guide, carefully drill a 3/8" hole into the stock upper coil spring pocket. Secure the new upper dual shock bracket to the stock upper coil spring bucket using the new 3/8" x 1.25" long bolt and hardware. Put the flat washer under the bolt head. **Make sure to use Loctite.** Torque to 30 ft./lbs. Repeat procedure on the passenger's side. **See Photo 1 Below (Driver's Side Shown).**

9. Locate the driver's and passenger's side lower shock mounting brackets. Working on the driver's side, remove the bolt that is holding the upper control arm into the stock location. Save the hardware for later re-installation. Install the new driver's side lower shock mounting bracket to the outside of the stock upper control arm pocket. Secure using the hardware that was removed earlier in this step. **Make sure to use Loctite.** Make sure that the new lower shock mounting bracket is flush with the outside of the stock upper control arm pocket and torque to 95 ft./lbs. Repeat the procedure on the passenger's side. **See Photo 2 Below (Driver's Side Shown).**
10. Working on the driver's side, using the new lower shock mounting bracket as a guide, carefully drill a 1/2" hole into the stock upper control arm pocket. Repeat procedure on the passenger's side.
11. Locate (2) 1/2" x 3" long bolts, (2) 1/2" flat washers and (2) 1/2" flanged head lock nuts from the hardware bag. Also, locate your new auxiliary shocks. Working on the driver's side, install the new auxiliary shock to the new upper dual shock mounting bracket that was installed earlier. Secure using the new 1/2" x 3" long bolts and hardware. Put the flat washer underneath the bolt head. **Make sure to use Loctite.** Do not tighten at this point. Repeat procedure on the passenger's side. **See Photo 3 Below (Driver's Side Shown).**
12. Locate (2) 1/2" x 3.5" long bolts, (2) 1/2" flat washers and (2) 1/2" flanged head lock nuts from the hardware bag. Secure the lower shock eyelet to the previously installed lower shock mounting bracket using the 1/2" x 3.5" long bolts and hardware. These are a tight fit and it may be necessary to grease the outside of the lower shock bushings and the inside of the lower shock mounting bracket. Place the flat washer underneath the bolt head. **Make sure to use Loctite.** Repeat procedure on the passenger's side. Then on both the driver's and passenger's side, torque all of the new hardware to 85 ft./lbs. **See Photo 4 Below (Driver's Side Shown).**
13. Carefully remove both hydraulic floor jacks from under the front axle. Install the tires and wheels on both sides and carefully lower the truck to the ground.
14. Re-install the front sway bar end links and fully tighten. Installation is complete!

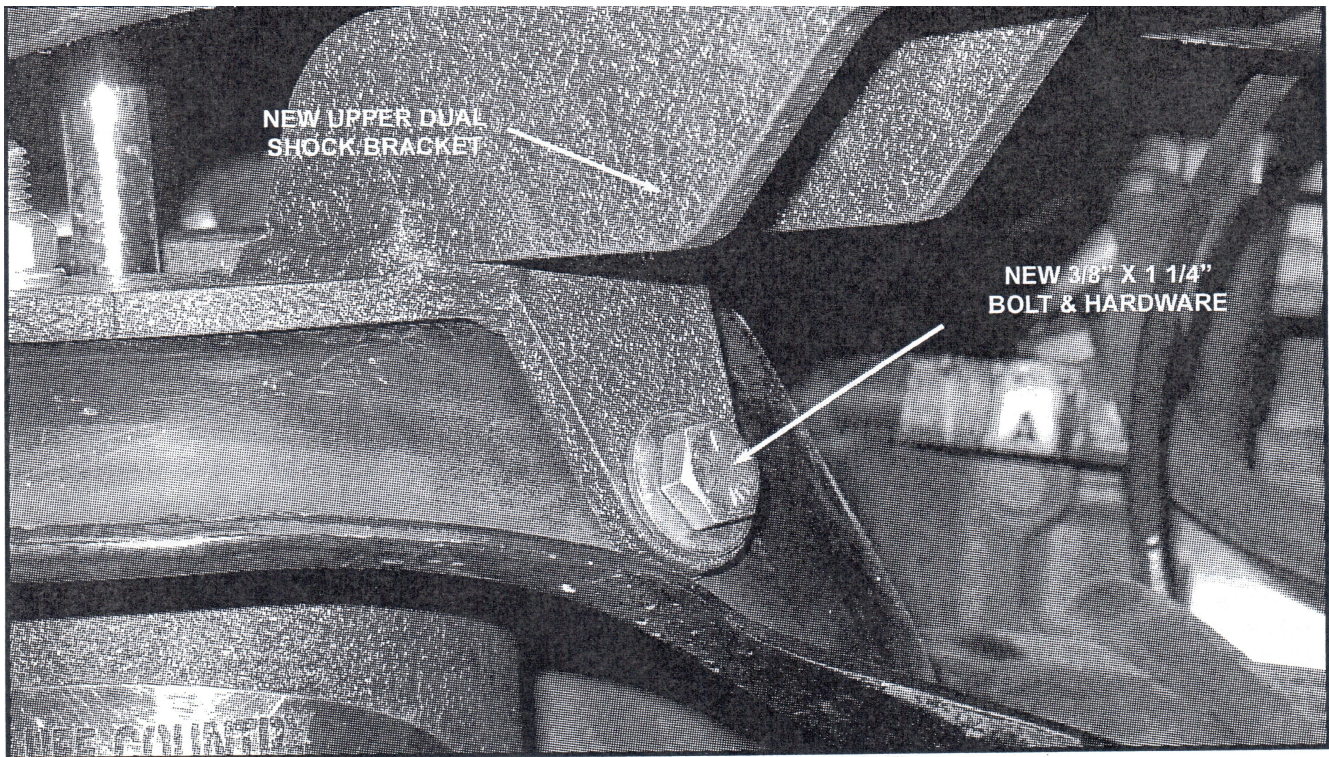


PHOTO # 1

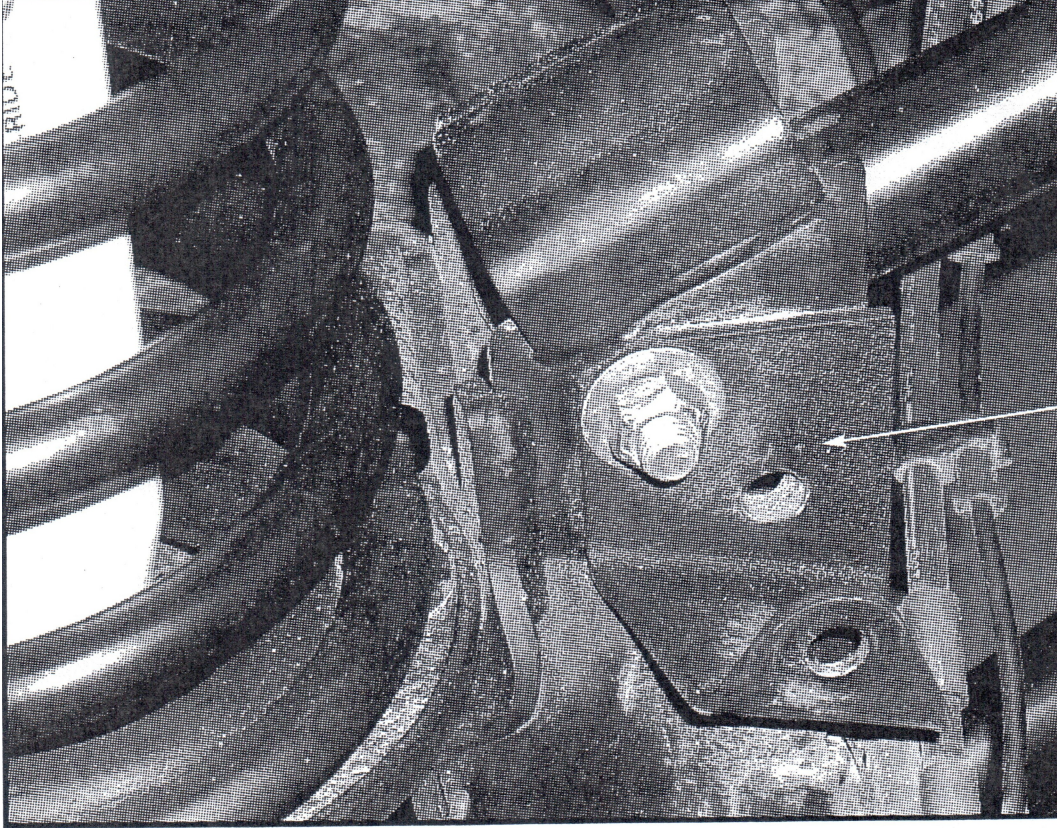


PHOTO # 2

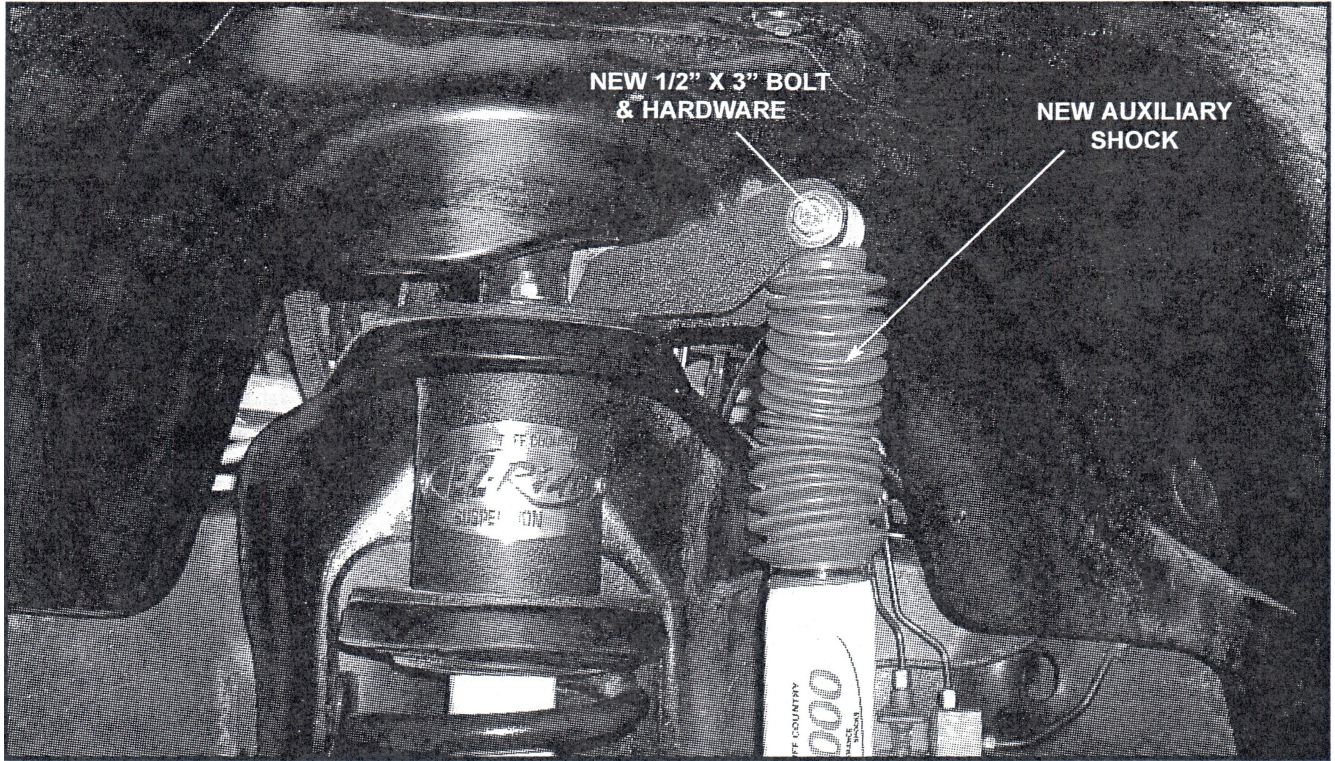


PHOTO # 3

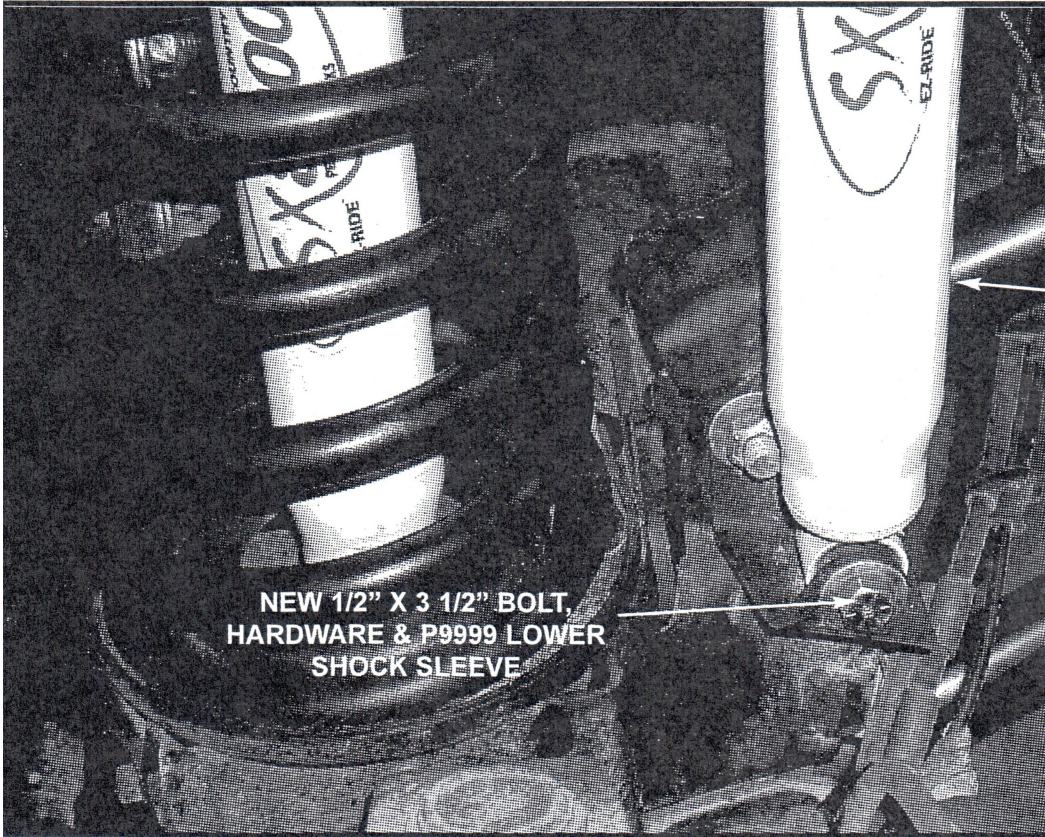


PHOTO # 4

Photo 5

